

Newsletter of the Kansas Orchid Society

Karlene Sanborn, KOS Newsletter Editor, ksanborn@prairieorchids.com

Aug 2008

Inside this Issue

AOS Corner, pg. 2
GPJC for April, pg. 3
July Minutes, pg. 2
Thank You Note, pg. 3
August Picnic, pg. 4
Featured Orchid, pg. 5

Meeting Schedule, 2008

August 17, 2008 - KOS Picnic at the Ethridge's Home ([details and map](#)), pg. 4

September 21, 2008 –Meeting at Botanica, 2:00 pm. Program. Designing and building a Show Exhibit and Registering plants at an Orchid Show.

October 19, 2008 -Meeting at Botanica, 2:00 p.m. Program. Flasks and compots, presented by Sarah Pratt.

October 31 – November 2 - KOS Orchid Show—Botanica—Wichita. (Show info on KOS website.)

November 16, 2008 – No Meeting.

December 7, 2008 - Christmas Party & Orchid Bingo—1:00 pm, Botanica – Wichita, KS

Deadline for KOS Newsletter Articles

Submit your articles for the KOS Newsletter by **Sept 11** to ksanborn@prairieorchids.com

New Members!

Just a reminder that new members, upon attending their second KOS meeting, will receive a FREE orchid plant.

To receive the plant, call Sarah Pratt at (316)772-0321 or email svcsjp@pixius.net to let her know you will be attending your second meeting and she will bring the plant for you.

President's Palaver

Hello everyone,

Hope everyone is enjoying the summer, or whatever season this is supposed to be--70⁰ mid-day on the 9th of August is amazing for Kansas.

Remember that the KOS annual picnic will be held at the Ethridge home (see details and map on page 4). Bill and Kathy have been camping for the last week and I am sure that Bill has been "chomping at the bit" to get home and fire up the smoker. Meat, drinks, and table service will be provided. All you need do is bring a covered dish (dessert, veggie, or salad) your lawn chair, and a desire to enjoy the day. The picnic is always great fun and gives members a chance to visit and catch up on what everyone has been up to during the summer.

New members, attending their second meeting, should call Sarah Pratt to let her know that you will be there—she will bring your free Orchid plant!

Thank you to those who have volunteered to help with the Fall Show. It appears that Sarah and Karlene have a great deal of the show organization covered; but, the Committee Chairs will be tapping you on the shoulder to help out. Invitations have been sent to 10 of the regional societies, and when the local advertisements get going we should have prospects of a great show.

The program for the September meeting will consist of two parts, 1) Designing and building a Show exhibit and 2) Registering plants at an Orchid Show. These two programs will be great for all members. Learning to use a show schedule and the alphabetic listing to accurately register your orchid plants helps to expand our knowledge of orchids. Then, of course, a few tips on design and construction will get your imagination going and you are on your way to a great exhibit for the show. Remember, exhibits can be entered by individuals or groups of individuals and can have as few as 5 orchid plants, or as many as you desire.

Mark A. Sanborn, KOS President

AOS CORNER

By Melba and Jim Butler

Orchid Trivia : "In a time of rapidly diminishing wild areas, of escalating population and pressure on what wild lands remain, it is necessary for thinking people to do all they can to reduce their adverse effect on our world. Above all, be aware of your actions and their potential effects. Who cares? You should."

(Last paragraph of the Introduction in ***The World's Most Beautiful Orchids*** by Greg Allikas & Ned Nash, p 49; Thunder Bay Press, San Diego, CA and PRC Publishing, London, United Kingdom; 2005).

Our personal comments: The pages of this beautifully written and illustrated book are primarily of orchid photographs and captions by Greg Allikas and very useful, interesting, helpful and thought-provoking information on many orchids, orchid topics and subjects by Ned Nash. The two made a fine team for this work and in their Acknowledgments to several, they credit Greg's wife, Kathy Fiegel, as the proofreader and editor of the manuscripts.

Hurricane Rita's Pineapple Cake

(aka Mexican Fruit Cake, Pineapple Yummie)

- 2 c. flour
- 2 c. sugar
- 2 eggs
- 2 t. baking soda
- 1 t. vanilla
- 1 16 oz. can crushed pineapple (including juice)

By hand, mix all ingredients together in mixing bowl; then, spread into a greased jelly roll pan. Bake at 350^o until golden brown (11-14 minutes).

While still warm, frost cake with:

- 1 stick margarine (or butter)
- 1 8 oz. pkg. cream cheese
- 2 c. powdered sugar
- 2 t. vanilla

With electric mixer, mix all ingredients until smooth. Spread icing onto cake.

Note: Bottom of jelly roll pan should be warm to touch (not hot) when the cake is iced.

July 20, 2008, Meeting Minutes

The meeting was hosted by Mark and Karlene Sanborn at their home in El Dorado, KS. Members were free to tour their greenhouse and purchase available plants and appreciate non-sale plants as well.

The meeting was called to order by President Mark Sanborn, who welcomed all including our guest, Holly Lofton.

Richard Vanderlip made a motion to accept the minutes as printed. The motion was seconded by Max Thompson and it carried.

Kathy Ethridge presented the Treasurer's report. The motion to accept the report was made by Max Thompson and seconded by Sarah Pratt. The motion carried.

Max Thompson reported 13 plants were entered at the Gt. Plains Judging Center and Sarah Pratt won an award. A new system of using photos to identify plants has been initiated. More details later.

Sarah Pratt gave her co-chair report on the upcoming KOS full exhibit show in November. The meeting in September will be devoted to how to enter plants and put together an exhibit.

Bryon Rinke made a motion to contribute \$1,000.00 to the Orchid Digest to support their coming publication on Masdevallias and Pleurothallids. He will also ask for a free copy for members to use. Richard Vanderlip seconded the motion and it carried.

Ron Haselhuhn, Native Orchids and Conservation Chairman, reported that he and Phil Winter had noticed in Lyon County that excessive mowing of right of ways etc. is destroying native orchids. Ron has been in contact with the authorities and Max Thompson has volunteered to help with the problem. Ron also voiced an interest in seeing the results of SWROGA funded research projects.

KOS wishes to express our sympathy to AOS President, Carlos Fighetti, on the loss of his wife, Tere. Max Thompson made a motion that a \$500.00 gift to the AOS Heritage Orchid Collection would be appropriate. Bryon Rinke seconded the motion and it carried. Holly Lofton, will prepare the presentation of this gift. This project was of special interest to Tere.

Bryon Rinke will place a plant order from Seidel's by August first. He can e-mail the address for the plant list to any member wanting it. Karlene Sanborn has tickets for anyone who would appreciate an opportunity to own a beautiful set of orchid silverware. This is sponsored by SWROGA.

Max Thompson said he had received a very nice thank you letter from Peg Walters' family. The basket piece of orchids with yellow roses added, on request, honored our long time member and it was appreciated by her family.

Bryon Rinke provided information about World Land Trust-US that purchases land to save threatened habitats. Bryon made a motion to contribute \$1,000.00 to this worthy organization. Donna Nelson seconded the motion and it carried.

Max Thompson presented the Orchid Digest Award of Excellence to Marlen McIntosh for her exceptional service to KOS. How great to reward hard work and service. Marlen was Hospitality Chairman for many years and was in charge of the refreshments and food for our big AOS show in 2004. Many thanks to you, Marlen.

Several Show and Tell plants were on display and then it was time to enjoy the tasty refreshments provided by our hosts and maybe make time for one more trip to their greenhouse. Thanks to Mark and Karlene for a very special time.

Respectfully submitted by
JoAnne Grubb, Rec. Secretary

**Great Plains Judging Center
Oklahoma City, Oklahoma
July 19, 2008**

1. No Award	Trichocentrum (Oncidium) jonesianum (Species from Brazil)	B Rinke M Thompson
2. No Award	Cattleya leopoldii var alba (Species from Brazil)	M Thompson
3. No Award	Bulbophyllum katherinae (reticulatum) (Species from Borneo)	B Rinke
4. No Award	Eurychone rothschildiana (Species from Uganda)	B Rinke
5. No Award	Cryptochilus sanguine (Species from India)	B Rinke
6. HCC 77 Pts.	Rhynchosophrocattleya (Potinara) Elegant Dancer (Rsc. Don De Michaels x Rsc. Dark Eyes) 'Timbucktoo'	S Pratt
7. No Award	Cattleya Summer Spot (C. Summer Stars x C. aclandiae)	R Gabaldon
8. No Award	Psychopsis Mendenhall (Pyp. Butterfly x Pyp. papilio)	R Gabaldon
9. No Award	Rhynchosophrocattleya Waianae Leopard'Ching Hua' HCC 76 Pts. (Rsc. Peach Cobbler x C. Penny Kuroda)	B/J Kramer
10. No Award	Darwinara Charm (Neofinetia falcata x Vascostylis Tham Yuen Hae)	B/J Kramer
11. No Award	Vascostylis Pine Rivers (Ascocenda Peggy Foo x Rhynchostylis coelestis)	B/J Kramer
12. No Award	Paphiopedilum Hsinying Moonlight (Paph. primulinum x Paph. Yosemite Moon)	B/J Kramer
13. No Award	Sievekingia reichenbachiana (Species from Ecuador)	B Rinke

Team 1: Plants 1-4,13

*Maureen Gebetsberger
Mark Stroube
Ray Gabaldon
Billie Kramer
Sarah Pratt (Student)

Team 2: Plants 5-8

*Danny Lyon (Prob)
Karl Siegler
John Kramer
Karlene Sanborn
(Student)

Team 3: Plants 9-12

*Bryon K. Rinke
Carolyn McCabe
Pam Norberg (Prob)
GaryBlankenbiller (P)

****Max C. Thompson presiding over judging**
Karl Siegler Photographer**



Dear Orchid Society,

I would like to tell you how much I appreciate receiving the Orchid Digest Award of Excellence. When Max was describing the person being awarded I had so many other people in mind who I thought were deserving of the honor. So, you really surprised me and needless to say I was rather speechless.

Now I would like to thank everyone on the board who thought me worthy, I truly appreciate it.

Thank You,

Marlen McIntosh

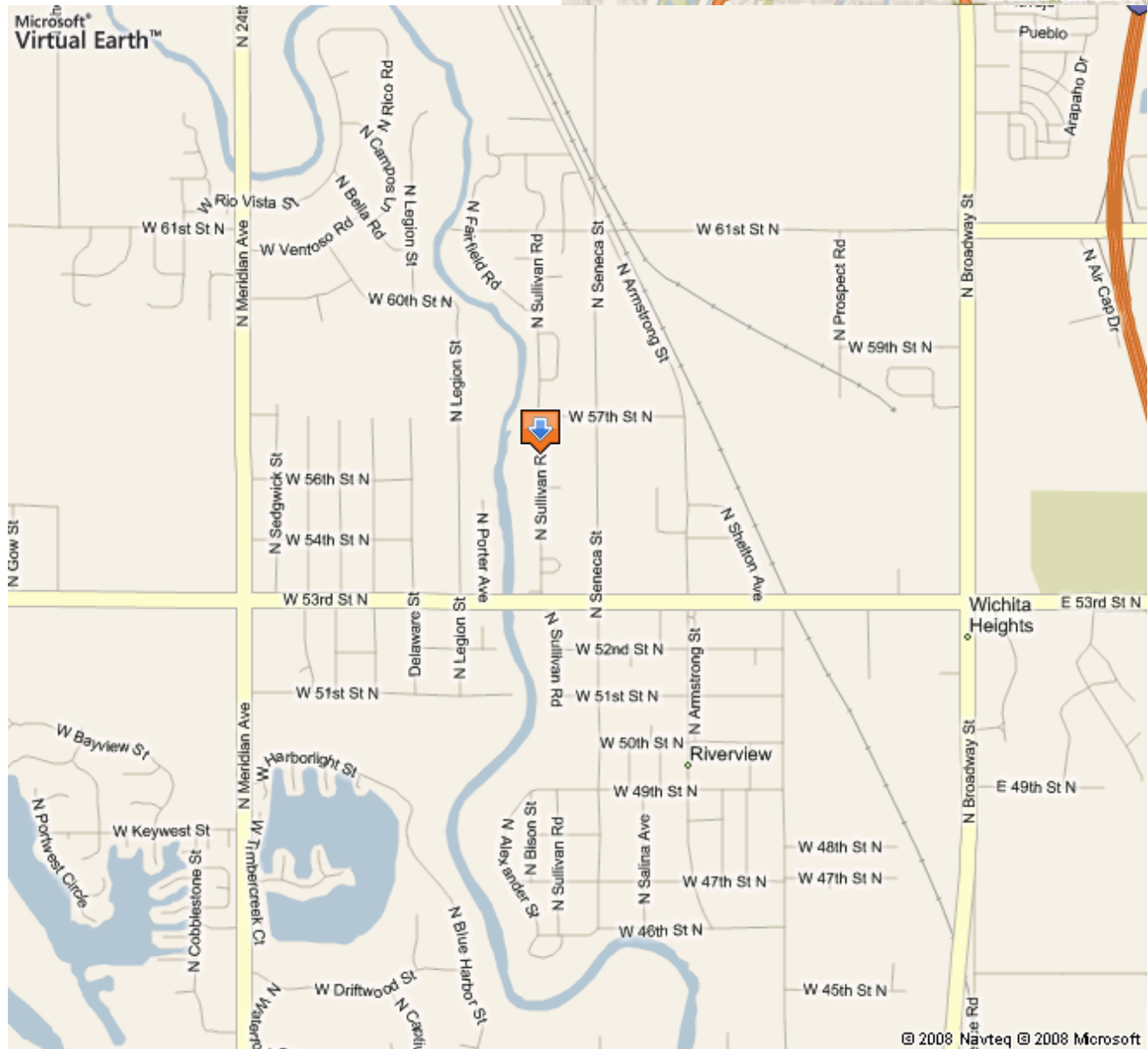
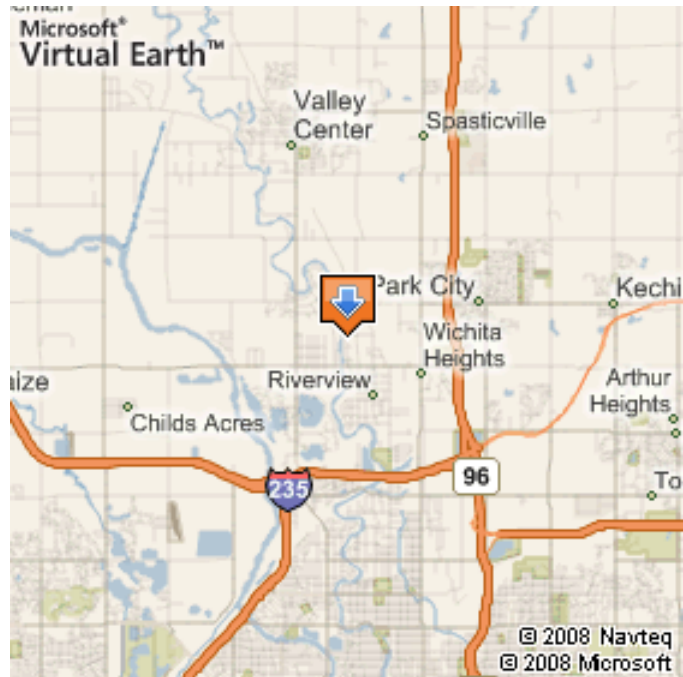
KOS Picnic, August 17

The KOS Annual Picnic will be at the home of Bill and Kathy Ethridge at 1:00 p.m. on Sunday, August 17. The location is 5709 Sullivan Road (see map.)

The Society will provide the meat (whatever we can fit in the smoker). Please bring a dessert, vegetable, or salad to share, plus lawn chairs. Drinks and table service will be furnished.

If you have questions, please call 316-838-1634.

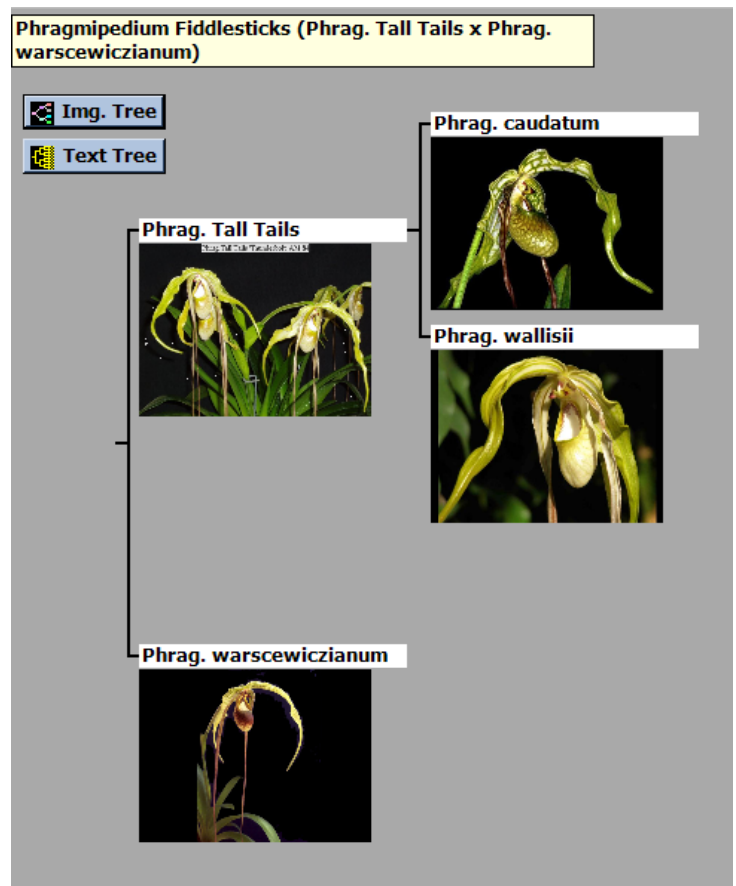
Kathy Ethridge



Phragmipedium Fiddlesticks 'Max' AM/AOS (Phragmipedium Tall Tails x Phragmipedium warscewiczianum)



Grown by **Max Thompson**,
photographed by **Karl Siegler**



From **OrchidWiz Encyclopedia Ver 5.0**

Given the parentage of Phrag. Fiddlesticks 'Max', this hybrid should be grown in bright indirect light conditions with 60%-70% humidity. Temperatures should be cool to intermediate (58°F to 75°F at night). Phragmipediums should not be allowed to dry out between waterings. Grow in a plastic pot with media that drains well but retains moisture. Commonly cultivated indoors. Fertilize weekly, very lightly (one quarter the normal dose). Common media: fine fir bark, with a little perlite.

Karlene Sanborn
1925 SW Mustang Road
El Dorado, KS 67042



KOS Officers, 2008

President	Mark Sanborn	316-321-0822
Vice Pres.	Bryon Rinke	620-221-1856
Treasurer	Kathy Ethridge	316-838-1634
Rec. Sec.	JoAnne Grubb	316-773-9278
Past Pres.	Bryon Rinke	620-221-1856

KOS Board of Directors, 2008

Jill Stackley	2008 (end of term)
Max Thompson	2008 (end of term)
Richard Vanderlip	2009 (end of term)
Karlene Sanborn	2009 (end of term)
Sarah Pratt	2010 (end of term)
Ron Haselhuhn	2010 (end of term)

KOS Garden Council Representative

Kathy Ethridge

Committee Chairpersons

Finance	Bryon Rinke
Program	Bryon Rinke
Nominations	Max Thompson
Hospitality	Rose Meals
Publicity	Kathy Ethridge
Membership	Kathy Ethridge
Native Orchids & Conservation	Ron Haselhuhn

KOS Newsletter Editor

Karlene Sanborn 316-321-0822