



# Newsletter of the Kansas Orchid Society

Sarah Pratt, Editor

August 2021

President's Palaver; pg 1  
2021 Meeting dates and Programs; pg 1  
June Minutes; pg 2.  
Orchid Conservation pg. 3  
GPJC results; pg. 4,5 & 6  
AOS Info and Definitions pg. 7

## 2021 Meeting Dates & Programs

All meetings are at 2:00 pm at Botanica  
**unless otherwise noted.**

**August 15:** Guest speaker - Dotty Woodson from Dallas, TX *"Don't throw away that Orchid"*

**September 19:** Guest Speaker - Doug Martin *Kansas Native Orchids*

**October 17:** resources for information and prepare for show

**November 6 - 7:** KOS Fall Show & Sale

**November:** no meeting

**December 12:** Xmas party and Orchid Bingo (this is a member's only event)

### NEW MEMBERS

New KOS members receive a free orchid plant when they attend their second meeting.

Contact Sarah Pratt at [svcsjp@gmail.com](mailto:svcsjp@gmail.com) and she will try to pick out something special for you.

## President's Palaver

For everyone who hasn't participated in one of our fall shows, I hope last month's program was just the nudge you need to join us at our fall show Nov.6. There's no pain or suffering involved. It's a super way to learn, participate in KOS, learn more about orchids and just have a good time. Bring a plant or two or three and join in the fun.

For our program this month, Dr. Dotty Woodson will tell us "Don't throw away that orchid". Maybe we all give up too quickly and pitch that orchid that looks dead or just looks like it's too far gone to keep around. I know I've given up on plants sometimes too quickly. Looking at her greenhouse on Facebook I can tell she is a really good orchid grower. There will be something to learn for all of us.

Covid seems to be making a bit of a comeback. I encourage everyone to take whatever precautions you feel are necessary. See you on the 15th.

Greg Tompkins, President

# Kansas Orchid Society Meeting Minutes

## July 18, 2021

The meeting was called to order by President Greg Tompkins at 2:00 pm.

We welcomed new member Steven Hahn. Blake Kruse, from Sedan, was a guest at the meeting

**Minutes:** Max Thompson moved to accept the minutes as published in the last newsletter. Richard Vanderlip seconded the motion. The minutes were unanimously approved as presented.

**Treasurer's Report:** Kathy Ethridge presented the Treasurer's Report and KOS made \$1,361.00 at our plant auction in June.

### **Committee Chair Reports:**

•Garden Council, Kathy Ethridge:

- 1. Botanica may invite a traveling educational exhibit to the gardens next year entitled "Washed Ashore" Art to save the Sea.
- 2. Lunchtime lectures have started- check the Botanica website for lecture dates and topics.
- 3. Botanica is looking for volunteers to help plant mums, pansies, and tulip bulbs

•Great Plains Judging Center, Bryon Rinke: Great Plains had 21 plants presented for judging and awarded 9 of them.

•Membership, Ruth Wilson: If you have not paid dues for 2021 please do so as soon as possible.

### **Old Business**

Our tickets to the AOS Centennial Celebration were given to Bryon Rinke to use as he sees fit

**New Business:** none

### **Announcements**

The American Orchid Society Special Award plaques were received by Sarah Pratt for The Carlyle A. Luer Pleurothallid Award for Pleurothallis gargantua 'Timbucktoo' AM/AOS

Max Thompson and Bryon Rinke received The Mario and Conni Ferrusi Award for the Most Outstanding Masdevallia, Dracula, or Dracuvallia for Masdevallia Anochecer 'Max and Bryon' FCC/AOS

### **Upcoming Show Dates**

October 2-3 Oklahoma Orchid Society, Southwestern Regional Orchid Society show

November 6 KOS Show and Sale

### **Program**

Sarah Pratt and Bryon Rinke explained how to enter our plants in a show, classes for different kinds of orchids, tabletop shows and exhibit shows, and the difference between ribbon judging and AOS judging. Above all it's fun and a good learning experience.

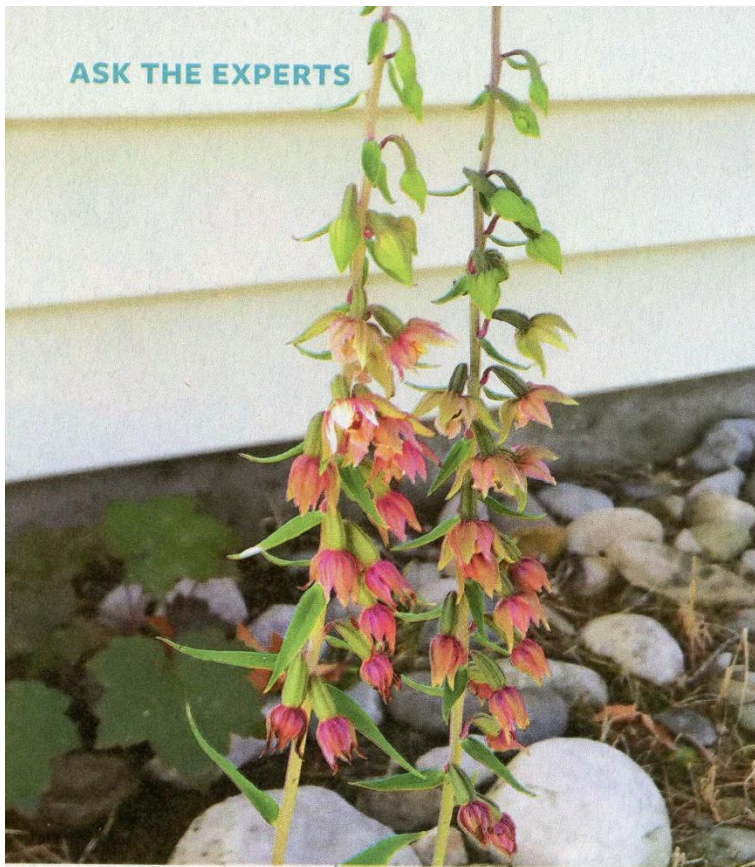
We enjoyed an interesting Show and Tell and had our plant raffle.

Respectfully submitted,  
Susan Tompkins, Secretary

This Q & A appeared in the magazine *Birds and Blooms*. It was questioned if one could try to eliminate a native orchid species.

Come to find out

***Epipactis helleborine*** is found in Ireland, Great Britain, Norway, Sweden, Finland, Denmark, Portugal, Spain, France, Corsica, Sardinia, Sicily, Belgium, Netherlands, Germany, Czechoslovakia, Switzerland, Austria, Italy, Hungary, Yugoslavia, Albania, Greece, Bulgaria, Romania, Poland, Russia, Cyprus, Turkey, Israel, Jordan, Lebanon, Syria, Iraq, Iran, Afghanistan, China, eastern Himalayas, Nepal, Pakistan, western Himalayas and Bhutan as well as **an alien invasive species in NE Canada and USA** in deciduous and coniferous woodlands, ravines, thickets and on the banks of streams at elevations of sea level to 2500 meters. -- Source: Jay Pfahl's IOSPE at [www.orchidspecies.com](http://www.orchidspecies.com)



## **Q** What's this shade plant in my lawn?

**Paula Crouterfield** GAYLORD, MICHIGAN

**Melinda:** This mystery plant is a weed that's invading flowerbeds and landscapes in Michigan, Wisconsin and a few neighboring states. Known as broad-leaved helleborine or weedy orchid (*Epipactis helleborine*), it spreads by seeds and rhizomes, which are basically underground stems. This unwanted plant is difficult to control. Dig up the plant—roots, rhizomes and all—when it's flowering. The plant's energy is focused on producing flowers and seeds then, so the hope is that it will be easier to eliminate. A total vegetation killer is another option, but several applications will be needed. Spot treat according to label directions to minimize the amount of chemicals used and to reduce risk to desirable plants and the environment.



There are a lot of color forms and variations described, and this species seems to be fairly widespread in the eastern and northeastern US. Again, this is not a native orchid, it is an invasive species from the other hemisphere. However, it is a 'wild orchid' and I for one, would let it grow in my garden if it wished to do so. Of course, all of our orchids originated from 'wild' orchids and what we grow are 'cultivated' species and hybrids.



# Great Plains Judging Center

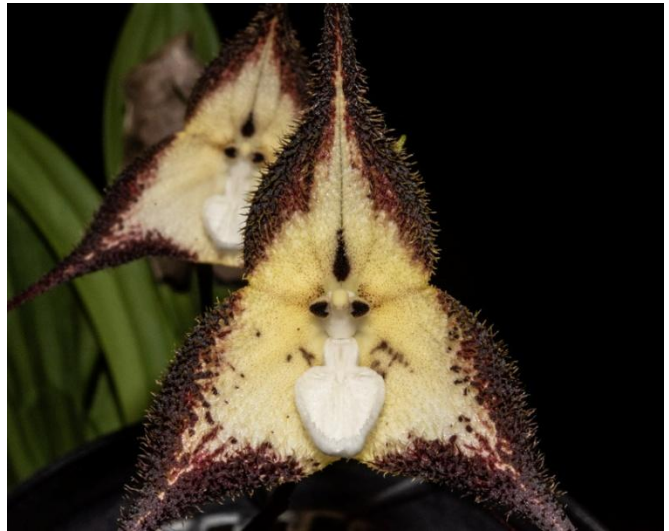
July 2021

Twenty-one plants were presented

Nine were awarded.



Brassocattleya Amethyst 'Max' HCC 77pts.  
Exhibitor: Max Thompson



Dracula cordobae 'Max' AM 82 pts.  
Exhibitor: Max Thompson



Anguloa clowesii 'Amsterdam'  
AM 81 pts.  
Exhibitor; Douglas Needham





*Phalaenopsis finleyi* 'Bryon Rinke' HCC 78 pts.  
Exhibitor; Bryon Rinke



*Cyrtorchis arcuata* 'Max & Bryon' CCM 88 pts.  
Exhibitor: Max Thompson and Bryon Rinke



*Phalaenopsis Forever Young* 'M & B Big One' AM 80 pts.  
Exhibitors: Max Thompson and Bryon Rinke

*Rodrumnia Walnut Valley Cherry*



'B & M' HCC 77 PTS.



'M & B' HCC 78 pts.

EDITOR'S NOTE: Both of these plants are *Rodrumnia Walnut Valley Cherry* siblings (out of the same seed pod). The *tolumnia* group is noted for being variable and producing siblings that can be very different in color.



# **Bulbophyllum lobbii 'Different' CCE 92 pts.**

Cultural Certificate of Excellence

Awarded to the grower for superior culture

Exhibitor: Sarah J Pratt



Seventy-nine evenly spaced and well presented flowers and six buds on 85 inflorescences up to 33cm long; extremely well grown, symmetrical, clean plant 105cm in diameter and 40cm in height grown in a 35-cm diameter hanging wire basket in a bark and sphagnum mix; flowers yellow, dorsal sepal erect, faintly lined pale green, reverse stippled maroon showing faintly through to front; lateral sepals falcate, veined and spotted maroon; petals strongly reflexed, veined maroon; lip articulate, lightly stippled maroon, apex reverse heavily stippled maroon; column yellow, column foot stippled maroon, anther cap bright yellow; substance very firm; texture waxy; plant has doubled in size and flower count over CCM award 20203584 awarded June 20, 2020.



## Next AOS Webinar



### Leafless Orchids

Mary Mancini, Wednesday, August 18, 2021

**Availability :** Member-Only

Join Mary Mancini as she explains the life cycle of leafless orchids and how they have adapted.



Check out the orchid marketplace. Now live at the American Orchid Society website.

[www.aos.org](http://www.aos.org)





10003 S. Hertzler Rd.  
Sedgwick, Kansas 67135

Return Address Requested