



Newsletter of the Kansas Orchid Society

Sarah Pratt, Editor

March 2023

Inside this issue

President's Palaver; pg. 1
2023 Meeting Schedule; pg. 1
Minutes; pg. 2
Membership; pg. 3
GPJC Awards from February; pg. 4,5,6
AOS Corner; pg 7
Definition; pg. 8

KOS Meeting Schedule

All meetings are held at Botanica in the Terrace Room at 2:00 pm, on the 3rd Sunday of each month **unless noted differently.**

Mar 19: *How did you get into orchids?- panel interview*

Apr 16: SW Greenhouse tour
May 14: Picnic
June 18: Auction
July 16: Highlights of travel experiences in other countries re: orchids
August 20: Stillwater (To be confirmed)
September 17: Show Prep
October 6,7th Fall Orchid Show & Sale
November 19: (TBD)
December 3: Christmas Bingo

NEW MEMBERS

New KOS members receive a free orchid plant when they attend their second meeting. Contact Sarah Pratt at svcsjp@gmail.com and she will try to pick out something special for you.

President's Palaver

Spring has finally come and gone; letting winter make itself comfortable once again. For all of us from this area it is what we expect this time of year. We know there will be two weeks of spring toward the end of April just before summer arrives. Remember this spring there are orchid shows all over the area and almost every other weekend, so try to catch one and then be sure to share what you found at the show with the rest of us.

Don't forget that Blake Kruse is creating a cookbook for the Great Plains Region and is asking members from the participating Orchid Societies to contribute Recipes, pictures, Short Stories and Anecdotes. Please make sure is logical and easily understood or Blake will edit as he deems necessary. Also, only one recipe per like item will be included, so be sure to submit more than one to ensure you're included; if he receives multiple but similar recipes for chocolate chip cookies he will only include one in the cookbook. Send recipes to Blake at blakekruse335@gmail.com.

Finally, you don't want to miss this month's meeting, it is going to be very interesting. The presentation will include a panel of several members discussing how and/or why they got into orchids. I'm looking forward to their answers. So, have you ever asked yourself what got you started in orchids and more interestingly, what keeps you going?

Susie Sutton,
President

There will be raffle plants!!

Kansas Orchid Society

Meeting Minutes

February 19, 2023

The meeting was held at Botanica and called to order by President Susie Sutton at 2 pm.

No guests or new members attended.

Minutes: Max Thompson moved to accept the minutes as published in the last newsletter. Richard Vanderlip seconded the motion. The minutes were unanimously approved as presented.

Treasurer's Report: Chad Sutton discussed our current financial position. The RCB Bank accounts have been closed and funds moved to Intrust. Some of funds have been put into CD's paying 4.25%. The goal is to establish higher interest rate CD's that mature at 5- or 6-month intervals so funds are readily available and yet are paying current rates. Treasurer's Report was filed for audit.

Committee Chair Reports:

Membership; Ruth Wilson: We have 49 members total but 17 have yet to renew for 2023.

Garden Council; Kathy Ethridge, Botanica's search for a director closed 1/16. 34 applicants expressed interest. The city now is narrowing the list to ensure that the chosen individual will be compatible with the city and the garden clubs. April is the Tulip festival, In May Botanica will begin a dinosaur exhibit for the summer.

GPJC; Bryon Rinke: Great Plains judged 24 plants on 2/18, 10 were awarded.

Old Business: none

New Business

•The Kansas City Mid-American Orchid Show is the same weekend that we normally have our Orchid Show, discussion followed with suggestions that we host our orchid show the first weekend of October (the 7 th), and then support the KC show the end of Oct. Motion was made by Max Thompson, seconded by Blake Kruse. Motion carried.

•Blake Kruse offered to make a KOS cookbook. We all are invited to bring him a minimum of 2 recipes to publish.

Meeting adjourned 2:26 pm.

Program: Max Thompson presented "*So You want to Become an AOS Judge? How to go about being one.*"

Followed by refreshments, Show & Tell, and the Plant Raffle.

Respectfully submitted,

Wanita Wright, Backup for vacationing Secretary

Newsletter Articles

If you have articles, **please send them on or before the 5th of the month to Sarah Pratt at**

svcsjp@gmail.com

Membership Renewal Time

Please be sure to confirm and print your e-mail address legibly!!

KOS membership is based on the calendar year (January—December). The exception would be for new members who signed up during the last quarter (October, November and December) of 2022. That membership would cover through December 2023.

Membership entitles you to the monthly KOS Newsletter which keeps you informed of Society activities and other “orchid related” news. Renew now to ensure that you do not miss anything.

KOS Membership Renewal Form 2023

Renewal ___ New Membership ___ Information Update ___

Name _____

Spouse/Significant Other Name _____

Address _____

State/Zip code _____

Phone Number (____) _____

E-mail: (must have this to send newsletter!) _____

Many of our members have requested that they have access to our membership list. If you DO NOT wish any of your personal information made available to the general KOS membership, please OPT OUT at this time.

No, I do not wish to share the following information _____

Individual Membership **\$15.00 per calendar year** Family Membership **\$20.00 per calendar year**

Life Membership **\$200.00**

I am a member of the American Orchid Society ___ Yes ___ No

I heard about the KOS from _____

Make Checks payable to the **Kansas Orchid Society** and send to:

Ruth Wilson

KOS Membership Chair

10003 S. Hertzler Rd., Box 193

Sedgwick, Kansas 67135



Sobralia sessilis
'Winfield' CBR

Exhibitor: Max Thompson and
Bryon Rinke

'Ninety-three flowers evenly borne over a massive specimen plant 190 cm in diameter and 130 cm tall'

A magnificent plant and remarkable growing achievement as the individual flowers only last for 24 hours. A CBR is a Certificate of Botanical Recognition which means that this particular species has never before been documented in the records of the American Orchid Society. Congratulations to Max and Bryon!!



Cynorkis uniflora 'Bryon Rinke'
AM 83 pts.

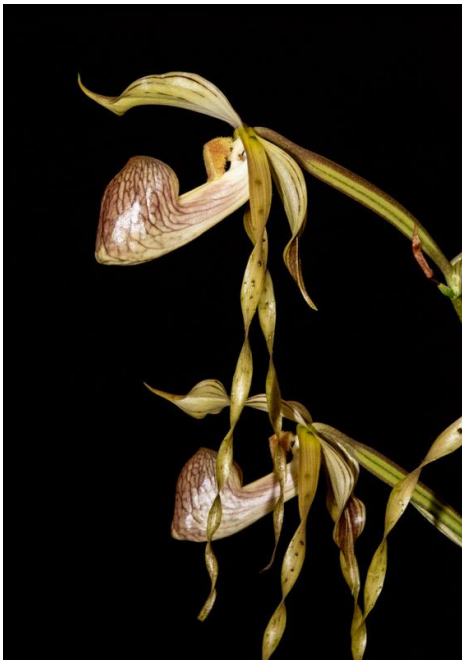
Exhibitor Bryon Rinke



Acianthera apthosa
'Bryon Rinke' CHM 82 pts.

Exhibitor: Bryon Rinke

Recognized for intense coloration when compared
to previous awards →



Paphiopedilum platyphyllum
'Bryon' AM 83 pts.
Exhibitor: Bryon Rinke



Paphiopedilum Beyond Pink
'Bryon' HCC 75 pts
Exhibitor; Bryon Rinke



Phragmipedium Robert C. Slinch
'Max' AM 81 pts.
Exhibitor: Max Thompson

Phalaenopsis White Dream 'V3'
CCM 83 pts.
Exhibitor: Douglas C. Needham





←
Phragmepedium conciferum
'Jacob Land' HCC 77 pts.
Exhibitor: Jana Butcher



Phragmepedium Ecuagenera Dream
'Peta Barrett' AM 80 pts.
Exhibitor: Jana Butcher

Paphiopedilum Petula's Distinction: Mephistopheles JC
Exhibitor: Jana Butcher

Judges Commendation; the dorsal sepal appears to be split and fused with petals forming an oblong semi-reniform shape, 'an interesting mutation producing an unusual an striking flower'.





American Orchid Society
Heritage • Education • Research

Let's Grow Together!

www.aos.org



Thursday, March 16, 2023 8:30 PM EST



AOS Greenhouse Chat with Ron McHatton

DRACULA...Whimsical Monsters of the Orchid World - Join Tom Etheridge, AOS judge and former trustee and officer, as he takes us through the mysterious world of Draculas. See why they are named "Dracula." *Member exclusive webinar*



Discover the top vendors in the orchid community and their special offers on all things orchid. If you are an AOS member, you also save 5% from every vendor. Two-Year AOS members also receive over \$600 worth of coupons from the ELITE Marketplace Partners.



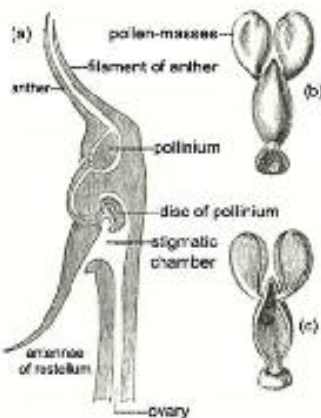
The Spring Members meeting will be held in conjunction with the San Diego County Orchid Society Show "Orchids of the Earth" Show dates are April 21st - 23rd.

A current schedule of events is available at aos.org. Content will continue to update as new details come through. more information at the website www.aos.org

Orchid definitions

ROSTELLUM –

a projecting part of the column in Orchidaceae flowers, which separates the male androecium from the female gynoecium, commonly preventing self-fertilization.



There are two sections in the genus *Catasetum*, one of which has perfect flowers, i.e. male and female reproductive organs in the same flower (or hermaphroditic flowers like most other orchids) and the other, the *Orthocatasetum*, has male flowers and female flowers, often on the same plant, and very rarely hermaphroditic flowers. A bee settles on the labellum of a male flower on which there is no nectar but part of the labellum has an enticing taste (to a bee) and so he gnaws it. There are two very sensitive antennae with their ends projecting and the bee touches one of these (in *C. saccatum*, the left one) and the pollen is ejected by means of a spring-like pedicel attached to the pollinia. It strikes the bee with considerable force and becomes attached to the thorax because it is sticky. On visiting another flower, a female, the pollen is removed and the female flower is fertilized.

In *Catasetum* flowers the rostellum projects forward at each side as an "antenna", and the pollen masses are connected by a bent stalk or pedicel to a sticky disc kept moist at the back of the flower. When an insect touches an "antenna", this releases the bent pedicel which springs straight and fires the pollinium, sticky disc first, at the insect. **Charles Darwin** described in *Fertilisation of Orchids* how he "touched the antennae of *C. callosum* whilst holding the flower at about a yard's distance from the window, and the pollinium hit the pane of glass, and adhered to the smooth vertical surface by its adhesive disc. **Supplemental picture explanation** – *Catasetum saccatum*: flower structure. (a) Diagrammatic section through the column with all the parts a little separated. (b) Pollination, upper surface. (c) Pollinium, lower surface, which before removal lies in close contact with the rostellum.



10003 S. Hertzler Rd.
Sedgwick, Kansas 67135

Return Address Requested